

## Cabin Distribution

	Classic Cabin	Classic Family Cabin	Standard Cabin	Owner's Cabin	Total Cabins
Cabin Deck	16	2	1	1	19
Main Deck				1	1
<b>Total</b>	<b>16</b>	<b>2</b>	<b>1</b>	<b>1</b>	<b>20</b>

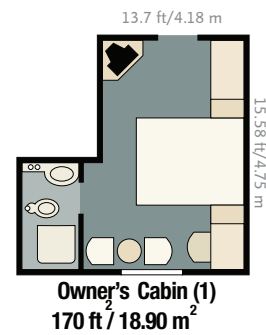
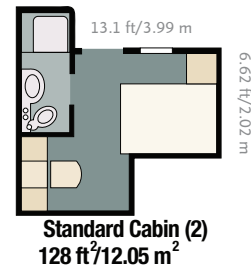
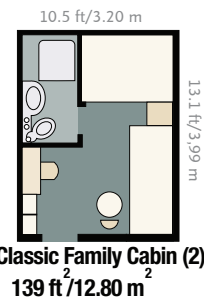
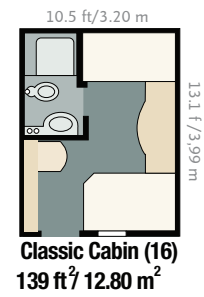
## Technical Specifications

Refurbishment	2016
Construction	1979
Gross Tonnage	1,025 tonnes
Passenger Space Ratio	25.6
Type of Vessel	Expedition Yacht
Capacity	40 guests/20 cabins
Length	184 feet (55.94 metres)
Beam	38 feet (11.58 metres)
Speed	9 knots
Electricity	110 V-220 V numerous electrical outlets A & B
Engines	2 Cummins KTA 38-M1 of 1000 HP each
Navigation Equipment	Satellite, gyrocompass, automatic pilot Radar, ARPA, GPS (2)
Fire Detector	Smoke detector and sprinkler systems in all areas
Life Jackets	In each cabin
Life Rafts	8 (25-person capacity each)
Landing Craft	3 inflatable Pumar + 1 Glass-bottom boat
Owner	ETICA (METROPOLITAN TOURING)
Decks	3
Naturalist Guides	3 (including Expedition Leader)
Crew	26
Guest-Crew Ratio	3:2
Medical Officer	Permanently on board
Safety Certifications	SOLAS 74, ISM, ISPS, MARPOL

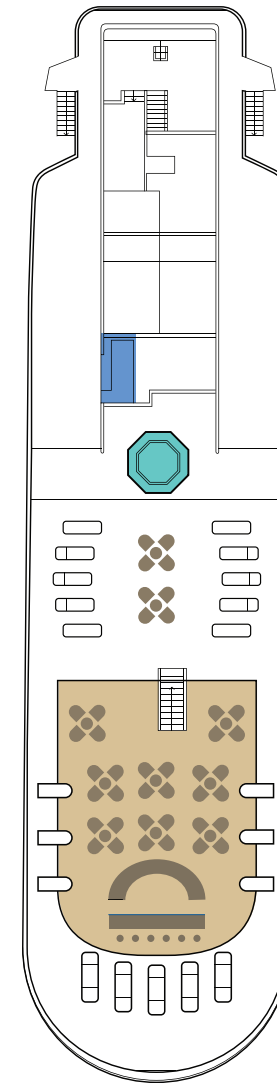
## Facilities & Amenities

- Bar Lounge
- Restaurant
- Outside Sky Bar
- Natural history library
- Infirmary (Medical Officer 24/7)
- Gift shop
- Hot tub
- Coffee station (free coffee, tea, and water 24/7)
- Water Dispenser
- Wi-Fi Zone (Principal deck)
- Wet suits (rental)
- Glass-bottom boat
- Pangas (inflatable dinghies for coastal exploration)
- Kayaks
- Snorkelling equipment
- PA system
- Fitness room
- Cabin Facilities: Air-conditioned, safe deposit box, hair dryer, eco friendly shampoo, conditioner and gel dispensers, satellite telephone

## Cabin Types

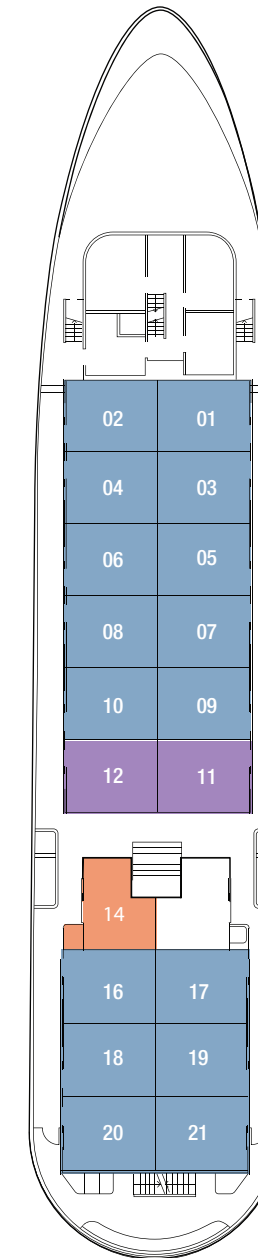


## Boat Deck



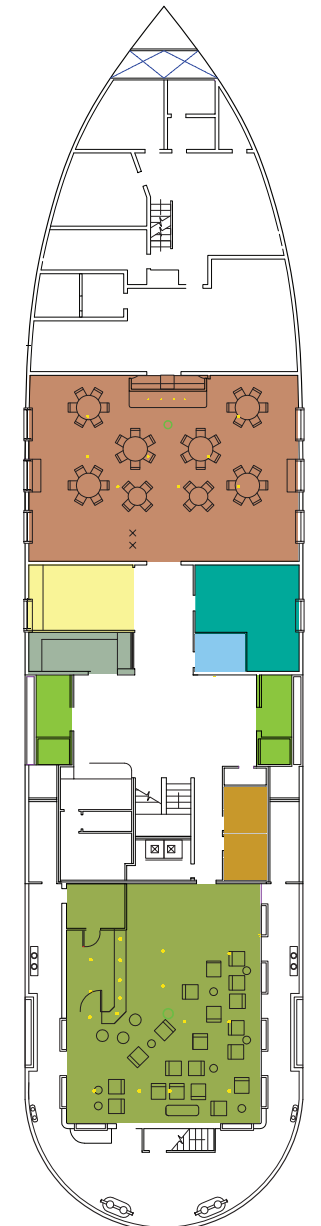
- Fitness Room
- Hot tub
- Outside Sky Bar

## Cabin Deck



- Classic Cabin (16)
- Classic Family Cabin (2)
- Standard Cabin (1)

## Main Deck



- Dining Room
- Natural history library
- Gift Shop
- Owner's Cabin
- Infirmary
- Disembarkation Gangway
- Restrooms
- Bar salon