

Cabin Distribution

	Darwin Suite	Voyager Single Cabin	Explorer Cabin	Explorer Family Cabin	Total Cabins	Interconnecting Cabins
Sky Deck						
Panorama Deck	3		3		6	6
Expedition Deck			17		17	12
Horizon Deck		2	23	2	27	18
Ocean Deck						
Total	3	2	43	2	50	36

Capacity: 90 guests/50 cabins

*Beds in most Explorer Double Cabins can be joined from twins to doubles.

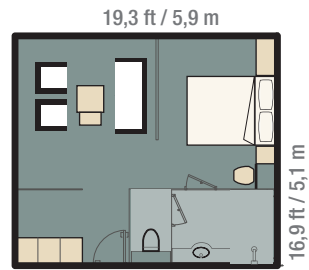
Technical Specifications

Refurbishment	2015
Construction	2002
Gross Tonnage	2664 tonnes
Passenger Space Ratio	29.6
Type of Vessel	Expedition Vessel
Capacity	90 guests / 50 cabins
Length	71.8 metres/235 feet
Beam	13.4 metres/43 feet
Speed	10.5 knots
Electricity	110 V - 220 V (60 Hz)
Engines	2 Cummins engines KTA 38 - MO of 850 HP each

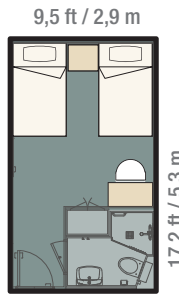
Fire Detector	Fire detectors throughout
Life Jackets	In each cabin
Life Rafts	14 (27 passengers each)
Landing Boats	6
Owner	ETICA (METROPOLITAN TOURING)
Decks	5
Crew	60
Naturalist Guides	8 (Includes Expedition Leader)
Guest-Crew Ratio	1:5 (3 guest to 2 staff members)
Medical Officer	Permanently on board
Certifications	ABS Classification Certificate, SOLAS 74, MARPOL, ISPS code, ISM code

Facilities & Amenities

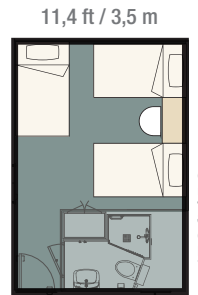
- Bar & Lounge
- Restaurant
- Outdoor Terrace
- Gift Shop
- Fitness Room
- 24h Coffee Station (free coffee, tea, and water 24/7)
- Satellite Telephone
- WiFi hotspot (intermittent/low bandwidth)
- PA system
- Snorkelling Equipment
- Hair Dryer
- Safe deposit box (in cabin)
- Hot Tub (2)
- Reading Room and Natural History Library
- Multiple Purpose Room
- Air conditioned throughout
- Wetsuit rental
- Glass bottom boat
- Sea Kayaks



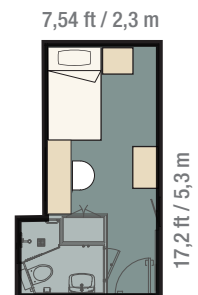
Darwin Suite (3)
325,2 sq ft / 30,2 m²



Explorer Cabin (43)
163,2 sq ft / 15,2 m²



Explorer Family Cabin (2)
191,9 sq ft / 17,8 m²



Voyager Single Cabin (2)
127,0 sq ft / 11,8 m²

